



FSB Series (M12, M14, M16)

RoHS Compliant

Multiple-Orifice (M12 is Single-Orifice) Fixed



<Characteristics>

- High-performance stopper bolt (with an integrated absorber)
- Designed for easy mounting

<Specifications>

Model		FSB-1205-C	FSB-1407-C	FSB-1609-C
Max. absorption energy	J (kgf·m)	0.68 (0.07)	2.5 (0.25)	6 (0.61)
Stroke	mm	5	7	9
Max. equivalent mass	kg (kgf)	5 (5)	20 (20)	50 (50)
Range of impact rate	m/s	0.3~1.0		
Max. drag	N (kgf)	588 (60)	1078 (110)	1960 (200)
Max. cycle rate	cycle/min	45	60	60
Max. absorption	J/min	65	120	200
energy per minute	(kgf·m/min)	(6.63)	(12.2)	(20.4)
Recovering power of the piston rod	N (kgf)	4.9 or lower (0.5)	4.9 or lower (0.5)	9.8 or lower (1.0)
Operating temperature	°C	-5~70		
Mass	g	40	70	115

Material	Main unit	SUM
	Cap	Polyacetal
Surface treatment	Main unit	Nitriding treatment

<Key to Model Number>

FSB - 16 09 - C

With/Without cap
Stroke
External screw size
Series name

C: With cap
(indicated in mm)
(indicated in mm)

<Precautions for Use>

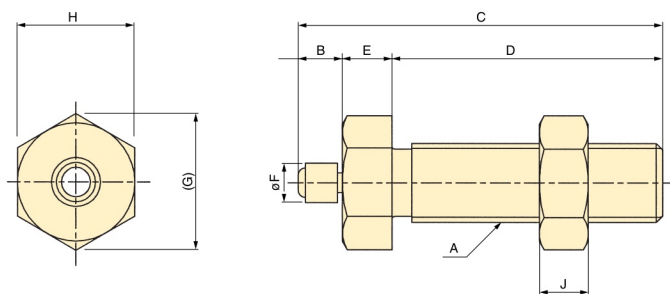
- * Do not use this product without carefully reading the attached owner's manual.
- * Ensure that sufficient mounting strength is secured for this product. (As a guideline, it should be 2 to 3 times the maximum drag listed in the catalogue.)
- * Do not use this product in a vacuum or a location where it may come in contact with oil.

- * Ensure that an eccentric load is not applied to the soft absorber. (Allowable eccentric angle: $\pm 2.5^\circ$)
- * Do not over-tighten the main unit and nuts. Please use the tightening torque as listed in the owner's manual.
- * Due to the structure of this product, using the absorber (piston rod side) in an upright position in a dusty environment causes the dust to collect on the absorber, which may affect the durability.



FSB Series

Dimensions



<Dimensions>

Model	A	B	C	D	E	F	G	H	J
FSB-1205-C	M12X1.75	5	43	30	8	6	21.9	19	7
FSB-1407-C	M14X2	7	56	40	9	6	25.4	22	8
FSB-1609-C	M16X2	9	74	55	10	8	27.7	24	10

* The screw pitch differs from other absorbers.

*Standard nuts are sold separately as well.

For FSB-1205: FSB-1205 nut

For FSB-1407: FSB-1407 nut

For FSB-1609: FSB-1609 nut