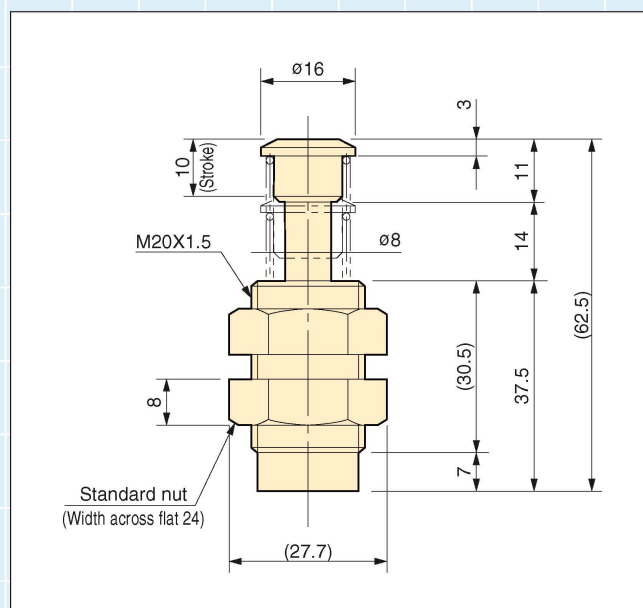




Soft Silent Safety

FED-2010M-C

Emergency Absorber Variable-Groove Orifice Fixed



<Specifications>

Model		FED-2010M-C
Max. absorption energy	J (kgf·m)	19.6 (2.0)
Stroke	mm	10
Max. equivalent mass	kg (kgf)	30 (30)
Range of impact rate	m/s	0.5~2
Max. drag	N (kgf)	6860 (700)
Recovering power of the piston rod	N (kgf)	41.2 (4.2) or lower
Operating temperature	°C	-5~70
Mass	g	79

- * This product is an affordable compact soft absorber for emergencies.
- * Light weight - made of aluminum.
- * As an emergency absorber, it will last for approximately 100 uses.

<Key to Model Number>

FED - 20 10 M - C

- With/Without cap
 - Performance classification
 - Stroke
 - External screw size
 - Series name
- C: With cap
M: For medium speed (Impact rate 0.5~2m/s)
(indicated in mm)
(indicated in mm)

<Precautions for Use>

- * Do not use this product without carefully reading the attached owner's manual.
- * Ensure that sufficient mounting strength is secured for this product. (As a guideline, it should be 2 to 3 times the maximum drag listed in the catalogue.)
- * Never apply eccentric load to the piston rod. In particular, when using in a rotating motion, the distance between the rotational centre of the impacted part and the mounted soft

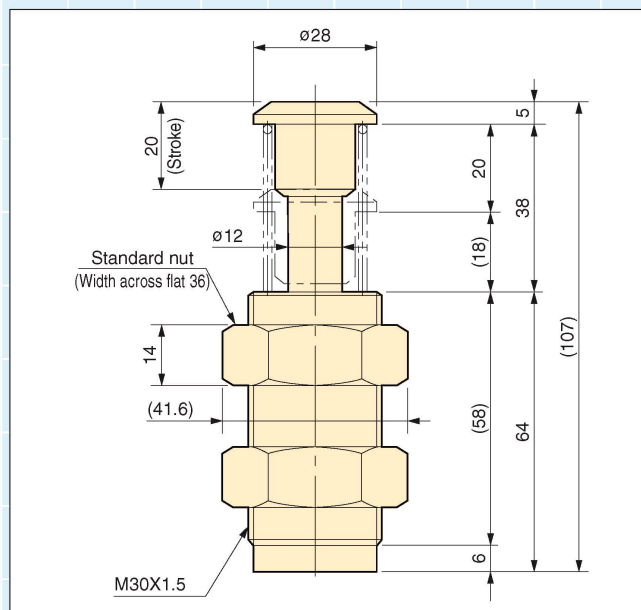
absorber should be at least 12 times the stroke length. The soft absorber should also be mounted so that it is perpendicular halfway through the stroke.

- * Do not over-tighten the standard nut. (Tightening torque: 14.7H·m)
- * Do not use this product in a vacuum or a location where it may come in contact with oil.

*Standard nuts are sold separately as well.
For FED-2010: M20 nut Black

FED-3020M-C

Emergency Absorber Variable-Groove Orifice Fixed



<Specifications>

Model		FED-3020M-C
Max. absorption energy	J (kgf·m)	98 (10)
Stroke	mm	20
Max. equivalent mass	kg (kgf)	140 (140)
Range of impact rate	m/s	0.5~2
Max. drag	N (kgf)	11760 (1200)
Recovering power of the piston rod	N (kgf)	68.6 (7.0) or lower
Operating temperature	°C	-5~70
Mass (S type)	g	350

- * This product is an affordable compact soft absorber for emergencies.
- * Light weight - made of aluminum.
- * As an emergency absorber, it will last for approximately 100 uses.

<Key to Model Number>

FED - 30 20 M - C

- With/Without cap
- Performance classification
- Stroke
- External screw size
- Series name
- C: With cap
- M: For medium speed (Impact rate 0.5~2m/s) (indicated in mm)
- (indicated in mm)

<Precautions for Use>

- * Do not use this product without carefully reading the attached owner's manual.
- * Ensure that sufficient mounting strength is secured for this product. (As a guideline, it should be 2 to 3 times the maximum drag listed in the catalogue.)
- * Never apply eccentric load to the piston rod. In particular, when using in a rotating motion, the distance between the rotational centre of the impacted part and the mounted soft absorber should be at least 12 times the stroke length. The

- soft absorber should also be mounted so that it is perpendicular halfway through the stroke.
- * Do not use this product in a vacuum or a location where it may come in contact with oil.
- * Do not over-tighten the standard nut. (Tightening torque: 29.4N·m)

*Standard nuts are sold separately as well.
For FED-3020: M30 nut Black